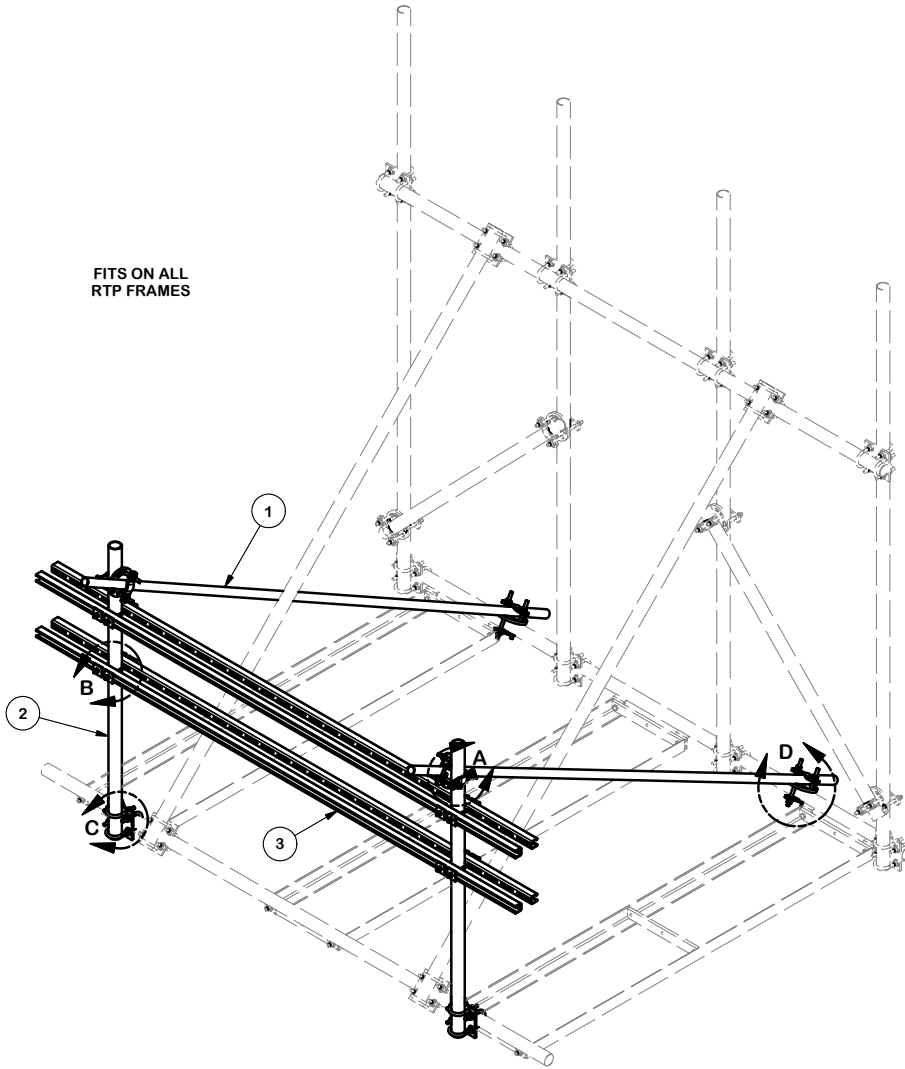
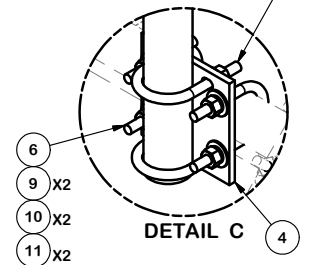
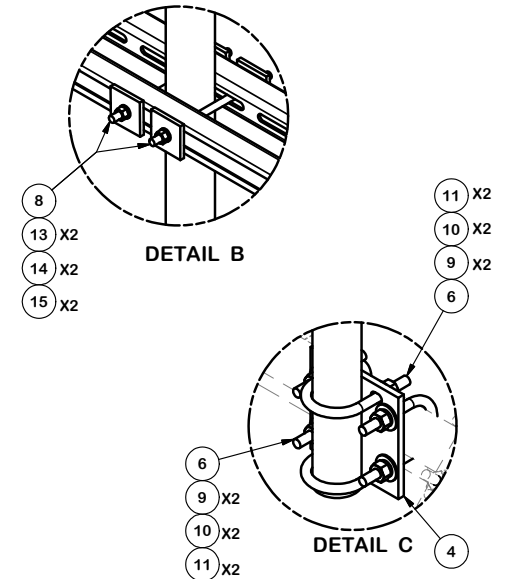
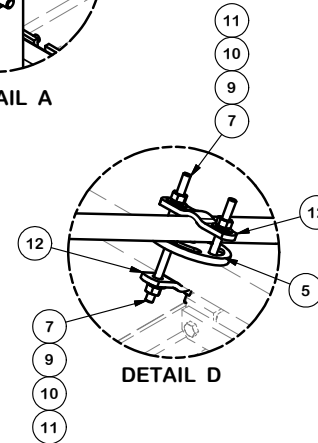
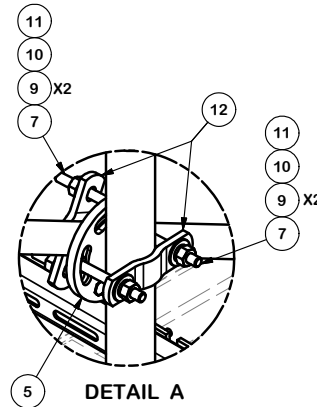


FITS ON ALL RTP FRAMES



PARTS LIST						
ITEM	QTY	PART NO.	PART DESCRIPTION	LENGTH	UNIT WT.	NET WT.
1	2	P1126	1 1/4" X 126" SCH 40 PIPE (STIFF ARM)	126 in	25.12	50.23
2	2	P263	2-3/8" X 63" SCH 40 GALVANIZED PIPE	63 in	20.18	40.37
3	4	UNT10	UNISTRUT		20.38	81.52
4	2	SCX1	CROSSOVER PLATE 2-3/8" X 2-3/8"		3.71	7.42
5	4	X-127594	FLAT DISK CLAMP PLATE 4" CENTERS (GALV.)		2.48	9.93
6	8	X-UB1212	1/2" X 2-1/2" X 4-1/2" X 2" U-BOLT (HDG.)		0.26	2.06
7	16	G1204	1/2" x 4" HDG HEX BOLT GR5 FULL THREAD	4 in	0.27	4.32
8	8	SS38R-8	3/8" X 8" THREADED ROD (STAINLESS STEEL)		0.25	2.01
9	32	G12FW	1/2" HDG USS FLATWASHER		0.03	1.09
10	32	G12LW	1/2" HDG LOCKWASHER		0.01	0.44
11	32	G12NUT	1/2" HDG HEAVY 2H HEX NUT		0.07	2.29
12	8	X-100064	CLAMP (S) (4" V-CLAMP) GALVANIZED		0.91	7.30
13	16	SQW38	3/8" SQUARE WASHER (GALV.)	2 in	0.27	4.37
14	16	SS38LW	3/8" SS LOCKWASHER		0.01	0.11
15	16	SS38NUT	3/8" SS HEX NUT		0.02	0.29
					TOTAL WT. #	216.69



TOLERANCE NOTES

TOLERANCES ON DIMENSIONS, UNLESS OTHERWISE NOTED ARE:
 SAWED, SHEARED AND GAS CUT EDGES ($\pm 0.030"$)
 DRILLED AND GAS CUT HOLES ($\pm 0.030"$) - NO CONING OF HOLES
 LASER CUT EDGES AND HOLES ($\pm 0.010"$) - NO CONING OF HOLES
 BENDS ARE $\pm 1/2$ DEGREE
 ALL OTHER MACHINING ($\pm 0.030"$)
 ALL OTHER ASSEMBLY ($\pm 0.060"$)

PROPRIETARY NOTE:
 THE DATA AND TECHNIQUES CONTAINED IN THIS DRAWING ARE PROPRIETARY INFORMATION OF VALMONT INDUSTRIES AND CONSIDERED A TRADE SECRET. ANY USE OR DISCLOSURE WITHOUT THE CONSENT OF VALMONT INDUSTRIES IS STRICTLY PROHIBITED.

DESCRIPTION
 RRU / EQUIPMENT RACK
 FOR RTP FRAMES

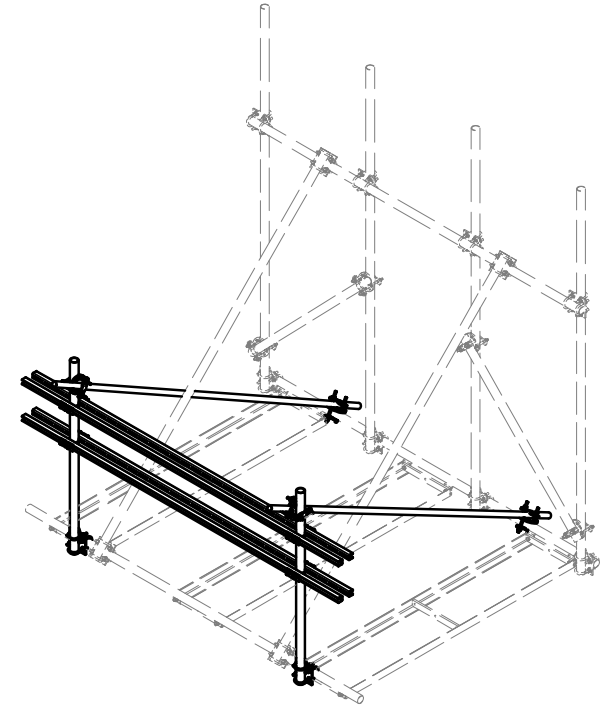
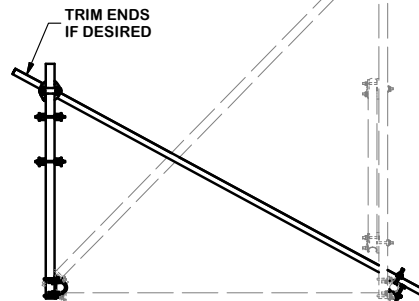
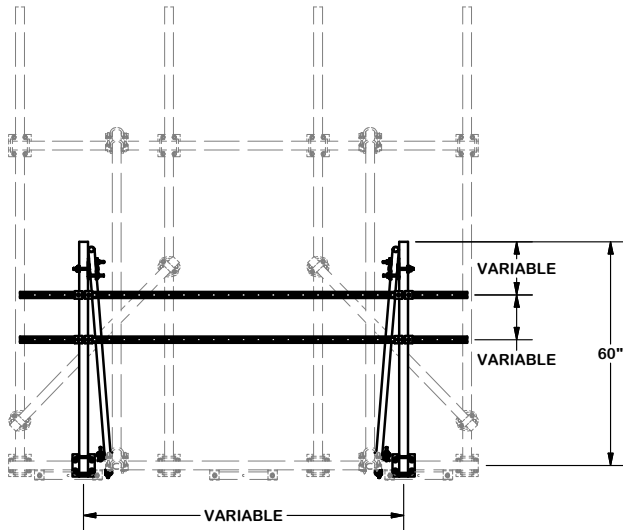
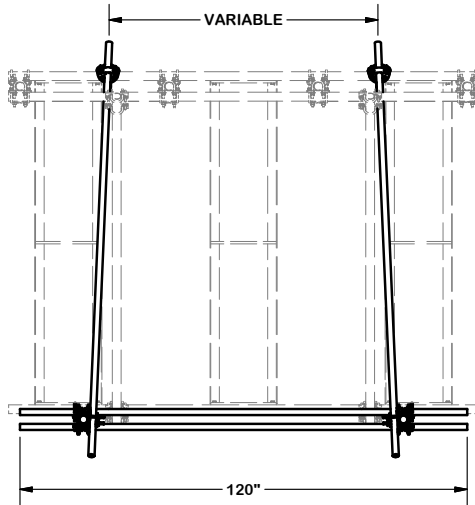
CPD NO.	DRAWN BY CEK 3/17/2015	ENG. APPROVAL
CLASS 81	SUB 01	DRAWING USAGE CUSTOMER
	CHECKED BY BMC 3/17/2015	

SITE PRO 1
 Engineering Support Team:
 1-888-753-7446

Locations:
 New York, NY
 Atlanta, GA
 Los Angeles, CA
 Plymouth, IN
 Salem, OR
 Dallas, TX

A valmont COMPANY

PART NO.	RTP-2UNT
DWG. NO.	RTP-2UNT



TOLERANCE NOTES

TOLERANCES ON DIMENSIONS, UNLESS OTHERWISE NOTED ARE:
 SAWED, SHEARED AND GAS CUT EDGES ($\pm 0.030"$)
 DRILLED AND GAS CUT HOLES ($\pm 0.030"$) - NO CONING OF HOLES
 LASER CUT EDGES AND HOLES ($\pm 0.010"$) - NO CONING OF HOLES
 BENDS ARE $\pm 1/2$ DEGREE
 ALL OTHER MACHINING ($\pm 0.030"$)
 ALL OTHER ASSEMBLY ($\pm 0.060"$)

PROPRIETARY NOTE:
 THE DATA AND TECHNIQUES CONTAINED IN THIS DRAWING ARE PROPRIETARY INFORMATION OF VALMONT INDUSTRIES AND CONSIDERED A TRADE SECRET. ANY USE OR DISCLOSURE WITHOUT THE CONSENT OF VALMONT INDUSTRIES IS STRICTLY PROHIBITED.

DESCRIPTION
 RRU / EQUIPMENT RACK
 FOR RTP FRAMES

CPD NO.	DRAWN BY	ENG. APPROVAL
CLASS	DRAWING USAGE	CHECKED BY
81	01	BMC 3/17/2015
	CUSTOMER	

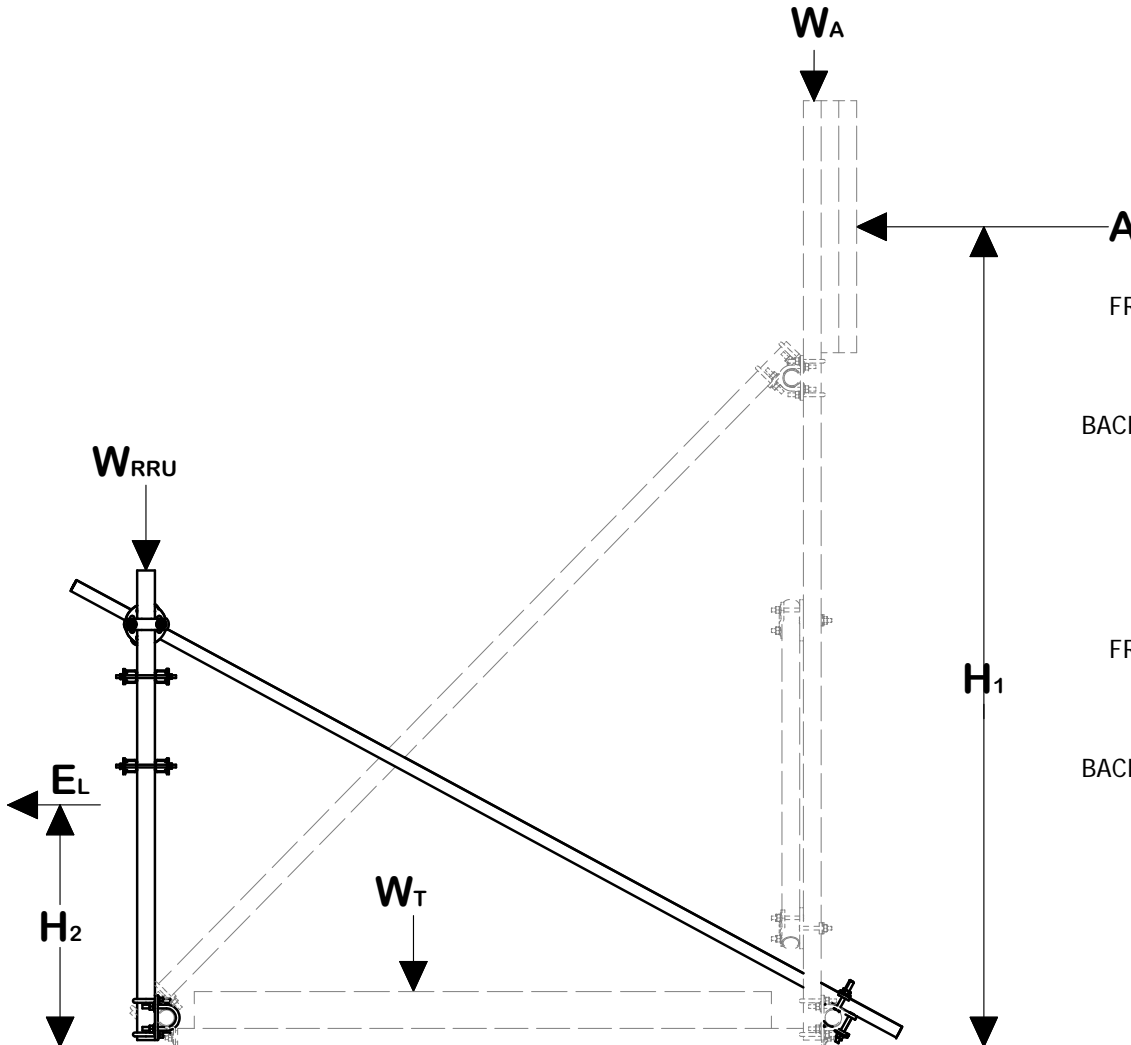
SITE PRO 1
 A valmont COMPANY

Engineering Support Team:
 1-888-753-7446

Locations:
 New York, NY
 Atlanta, GA
 Los Angeles, CA
 Plymouth, IN
 Salem, OR
 Dallas, TX

PART NO.	RTP-2UNT
DWG. NO.	RTP-2UNT

RTP FRAMES & RTP-RRU BALLAST EQUATIONS



BALLAST EQUATION WITH 1.5 SAFETY FACTOR:

$$\text{FRONT WIND} = W_T = \frac{(((A_L * H_1) + (E_L * H_2)) * 1.5) - (W_A * 7.25)}{3.625}$$

$$\text{BACK WIND} = W_T = \frac{(((A_L * H_1) + (-E_L * H_2)) * 1.5) - (W_{RRU} * 7.25)}{3.625}$$

BALLAST EQUATION WITH REV. G LOADING:

$$\text{FRONT WIND} = W_T = \frac{(((A_L * H_1) + (E_L * H_2)) * 1.6) - (W_A * 7.25)}{3.625 (0.9)}$$

$$\text{BACK WIND} = W_T = \frac{(((A_L * H_1) + (-E_L * H_2)) * 1.6) - (W_{RRU} * 7.25)}{3.625 (0.9)}$$

$$\begin{aligned} \text{RTP10} &= W = W_T / 3 \\ \text{RTP12} &= W = W_T / 4 \\ \text{RTP14} &= W = W_T / 6 \end{aligned}$$

- EL = EQUIPMENT LOAD (NON-FACTORED) lbs
- AL = ANTENNA LOAD (NON-FACTORED) lbs
- H₁ & H₂ = HEIGHT FROM ROOFTOP ft
- W_T = TOTAL BALLAST WEIGHT lbs
- W = BALLAST WEIGHT PER TRAY lbs
- W_{RRU} = 200 + EQUIPMENT WEIGHT lbs
- W_A = 260 + ANTENNA WEIGHT lbs

TOLERANCE NOTES

TOLERANCES ON DIMENSIONS, UNLESS OTHERWISE NOTED ARE:
 SAWED, SHEARED AND GAS CUT EDGES ($\pm 0.030"$)
 DRILLED AND GAS CUT HOLES ($\pm 0.030"$) - NO CONING OF HOLES
 LASER CUT EDGES AND HOLES ($\pm 0.010"$) - NO CONING OF HOLES
 BENDS ARE $\pm 1/2$ DEGREE
 ALL OTHER MACHINING ($\pm 0.030"$)
 ALL OTHER ASSEMBLY ($\pm 0.060"$)

PROPRIETARY NOTE:
 THE DATA AND TECHNIQUES CONTAINED IN THIS DRAWING ARE PROPRIETARY INFORMATION OF VALMONT INDUSTRIES AND CONSIDERED A TRADE SECRET. ANY USE OR DISCLOSURE WITHOUT THE CONSENT OF VALMONT INDUSTRIES IS STRICTLY PROHIBITED.

DESCRIPTION
 RRU / EQUIPMENT RACK
 FOR RTP FRAMES

Locations:
 New York, NY
 Atlanta, GA
 Los Angeles, CA
 Plymouth, IN
 Salem, OR
 Dallas, TX

Engineering Support Team:
 1-888-753-7446

A valmont COMPANY

CPD NO.	DRAWN BY CEK 3/17/2015	ENG. APPROVAL
CLASS 81	SUB 01	DRAWING USAGE CUSTOMER
		CHECKED BY BMC 3/17/2015

PART NO.	RTP-2UNT			PAGE
DWG. NO.	RTP-2UNT			3 OF 3